

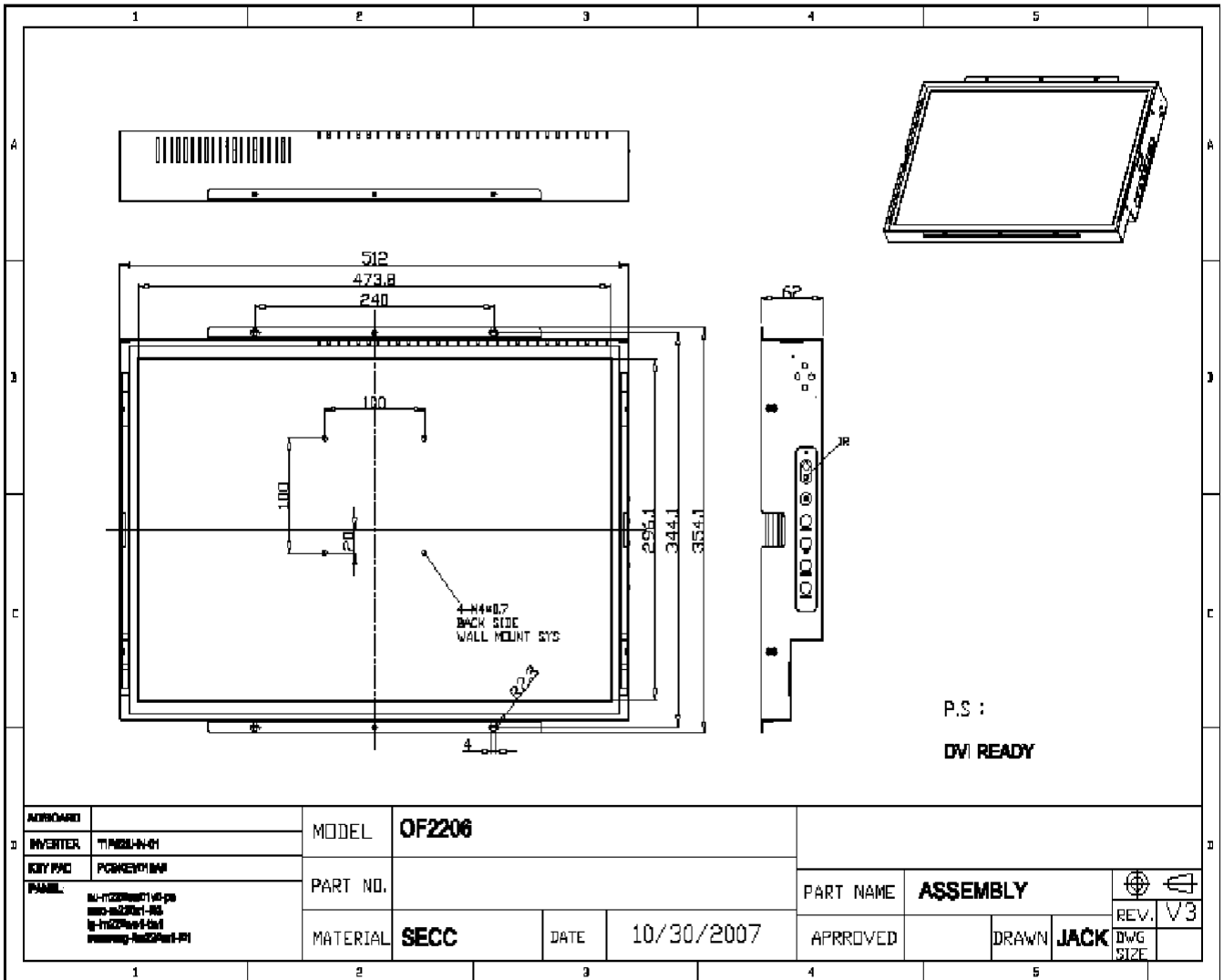
# Industrial Monitor



## TON22XH1

<b>Panel</b>	<b>Cell Type</b>	Color active matrix TFT (Thin-Film-Transistor) LCD panel	
	<b>Aspect Ratio / Size</b>	Wide / 22" viewable diagonal area	
	<b>Glass Surface</b>	Black Anti-Glare, low reflection coating	
	<b>Pixel numbers / Colors</b>	1680(H) x 1050(V) / 16.7 Million	
	<b>Pixel Pitch</b>	0.282(H) x 0.282(V) mm	
	<b>Active Area</b>	473.76(H) x 296.10(V) mm	
	<b>Light Source</b>	Long life, 50,000 hrs (typ)	
	<b>Brighness / Contrast</b>	300 cd/m <sup>2</sup> (typ) , 1000 : 1	
	<b>Viewing Angle</b>	Horizontal 170° (typ) (- 85° ~ + 85°)	
		Vertical 170° (typ) (-85° ~ + 85°)	
<b>Input Sources</b>	<b>PC System</b>	<b>Signal</b>	Analog RGB (0.7/1.0 V <sub>p-p</sub> , 75 ohms)
		<b>Sync</b>	Composite Sync, Separate Sync, Sync On Green
		<b>Frequency</b>	F <sub>H</sub> : 30 - 82Khz , F <sub>V</sub> : 50 -75Hz
		<b>Resolution</b>	1680 x 1050@60 / 70 / 75 Hz
			1440 x 900@60 / 70 / 75 Hz
			1024 x 768@60 / 70 / 75 Hz
			640 x 480@60 / 70 / 75 Hz
<b>Recommended</b>	1680 x 1050@60 Hz		
<b>Audio System</b>	Stereo Amplifier 2W x 2		
<b>Input Terminals</b>	<b>PC Signal</b>	15 Pin Female D-Sub x 1	
	<b>PC Audio</b>	Stereo Headphone Jack x 1	
	<b>Power Plug</b>	12VDC Jack	
<b>Control</b>	<b>Front Panel (5 Keys)</b>	Men/Select , Auto , Up , Down , Power	
<b>Convenient Features</b>	<b>Auto Calibration</b>		
	<b>Back Light Adjustment</b>		
	<b>OSD Menu</b>	Multi-Languages	
	<b>Wall Mount Ready</b>	VESA 100 X 100(mm)	
<b>Power</b>	<b>Input Voltage</b>	Universal / Auto-Sensing, 90 to 260VAC, 50 / 60 Hz	
<b>power Rating (Support DPMS)</b>	- <b>Operation</b>	33 watt	
	- <b>Stand-By</b>	< 5 watt	
	- <b>Off</b>	< 5 watt	
<b>Operating Condition</b>	<b>Temperature</b>	0°C ~ 40°C (32°F ~ 104°F)	
	<b>Humidity</b>	10% ~ 90% (no condensation)	
<b>Storage Condition</b>	<b>Temperature</b>	- 20°C ~ 60°C (- 4°F ~ 140°F)	
	<b>Humidity</b>	10% ~ 90% (no condensation)	
<b>Dimensions</b>	<b>Physical</b>	With Flange(W x H x D) : TBD	
		Without Flange(W x H x D) : TBD	
	<b>Carton</b>	W x H x D = TBD	
<b>Weight</b>	<b>N.W. / G.W.</b>	6.5 Kgs / 7.0 Kgs	
<b>Optional</b>	<b>SV + AV</b>		
	<b>Touch Screen</b>		
	<b>PC Mainboard</b>		
	<b>Speaker</b>		
	<b>Protect Glass</b>	Screen Protected , Double coating	
<b>Certification</b>		FCC , CE	

# Industrial Monitor



Zona Ind. Nord Torre Sapienza, 06055 Marsciano (PG)  
 Tel.+39 075 885 1026 - 885 2484 - Fax + 39 075 885 1170  
 info@monitor-industriali.com